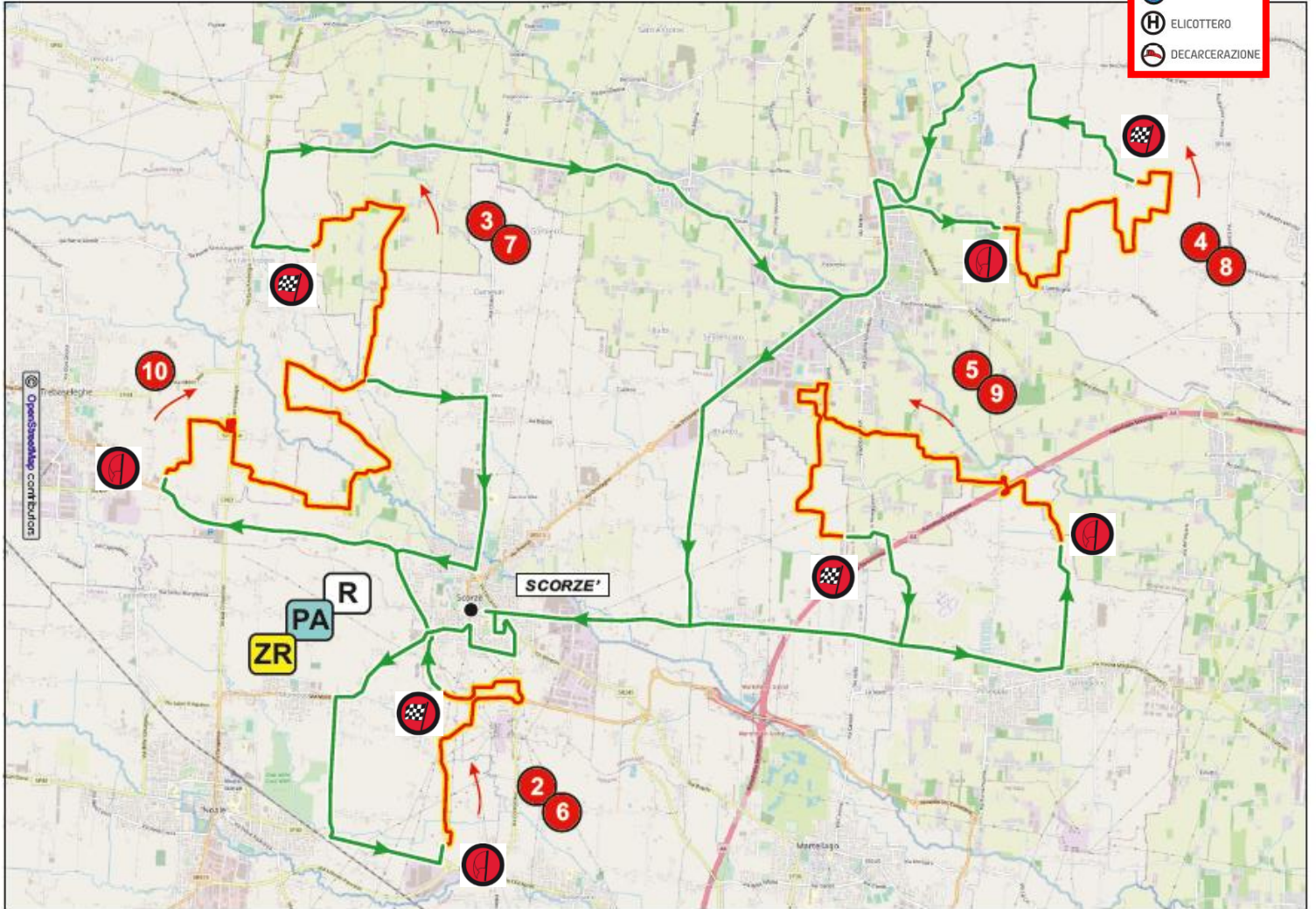
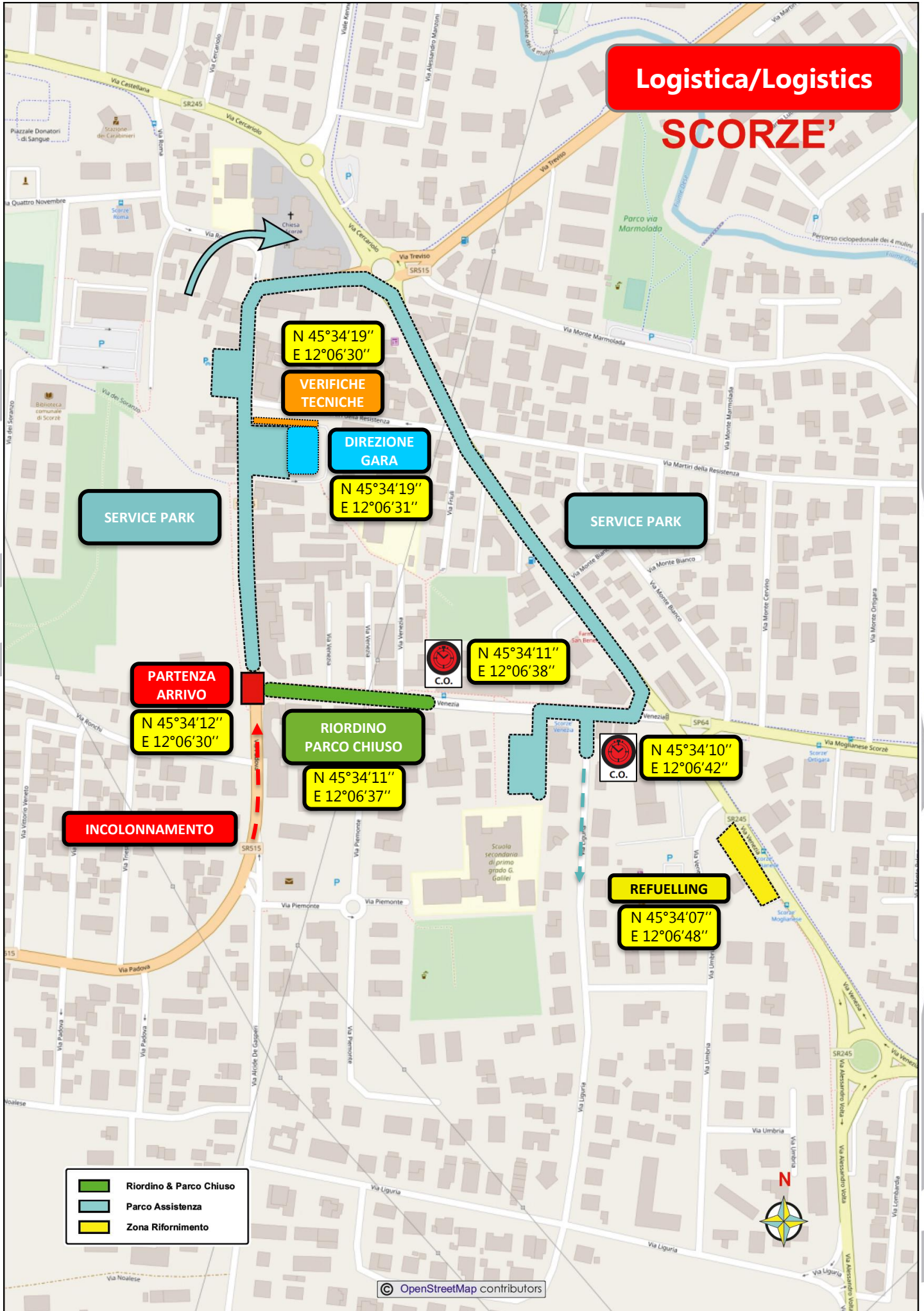


- LEGENDA**
- TRASFERIMENTO
  - PROVA SPECIALE
  - ALTERNATIVI
  - INIZIO PS
  - FINE PS
  - AMBULANZA
  - PUNTO RADIO
  - CARRO ATTREZZI
  - ESTINTORE
  - ELICOTTERO
  - DECARCERAZIONE

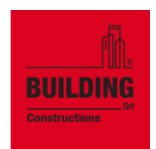
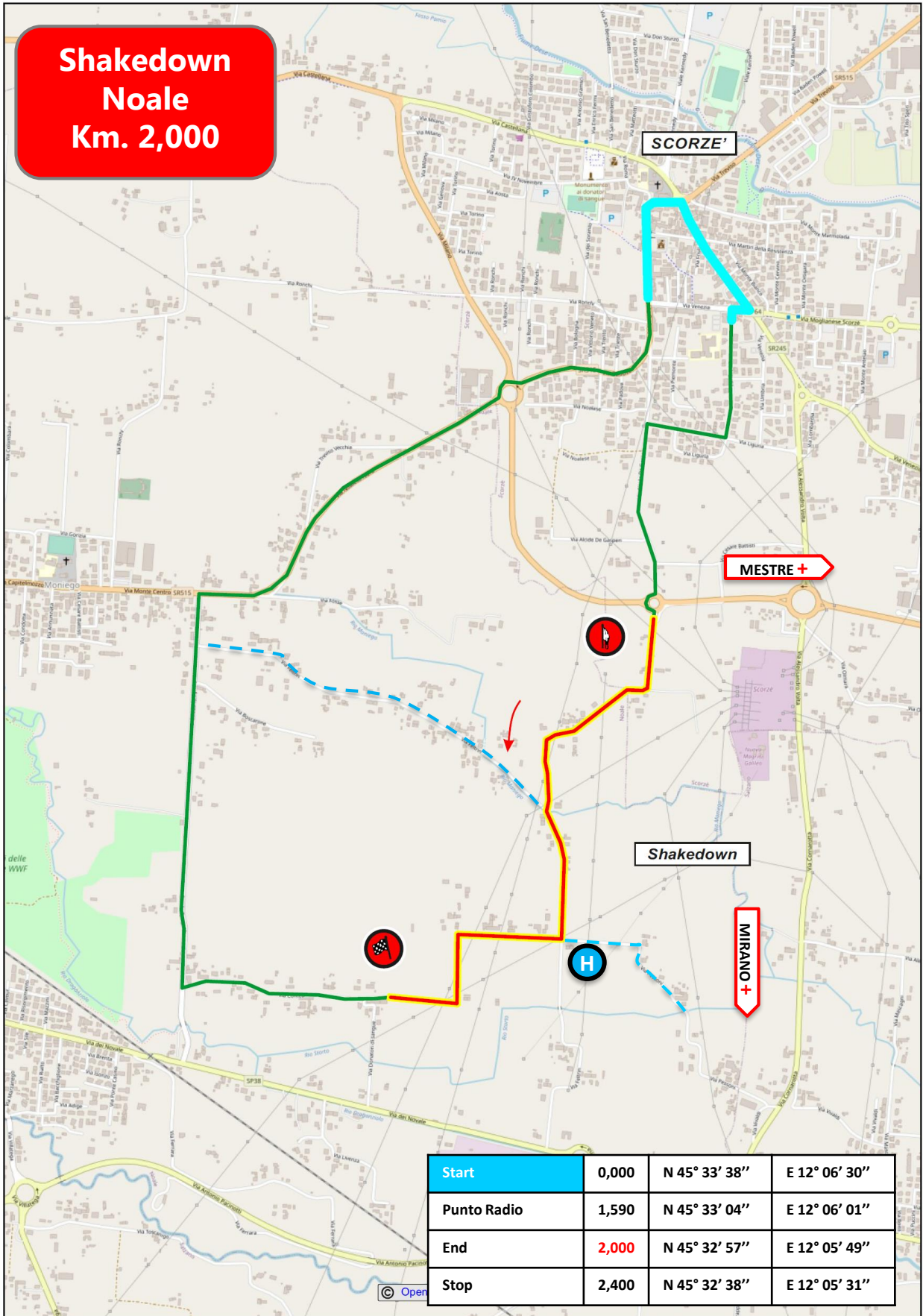


Logistica/Logistics

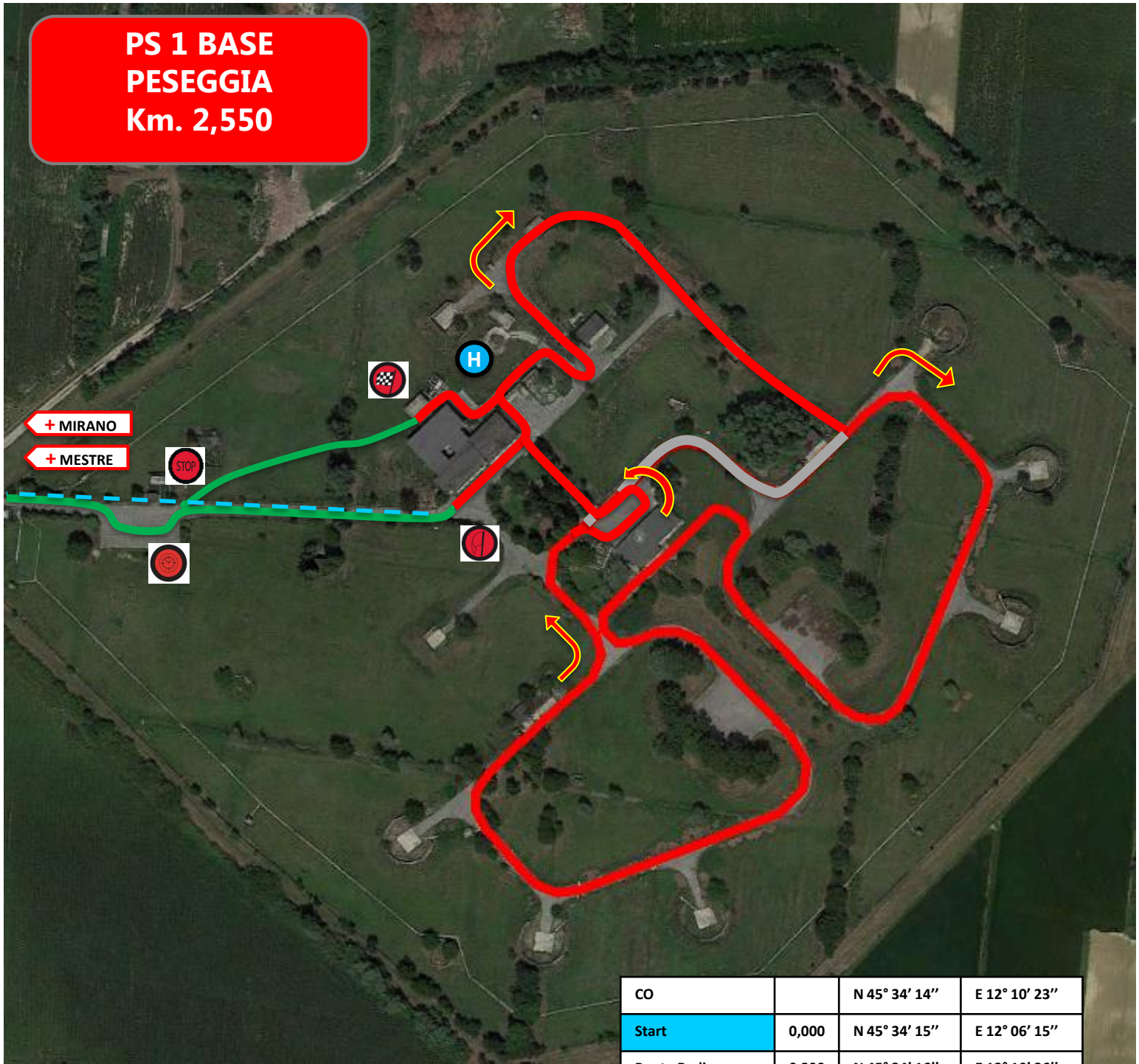
SCORZE'



- Riordino & Parco Chiuso
- Parco Assistenza
- Zona Rifornimento

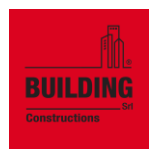
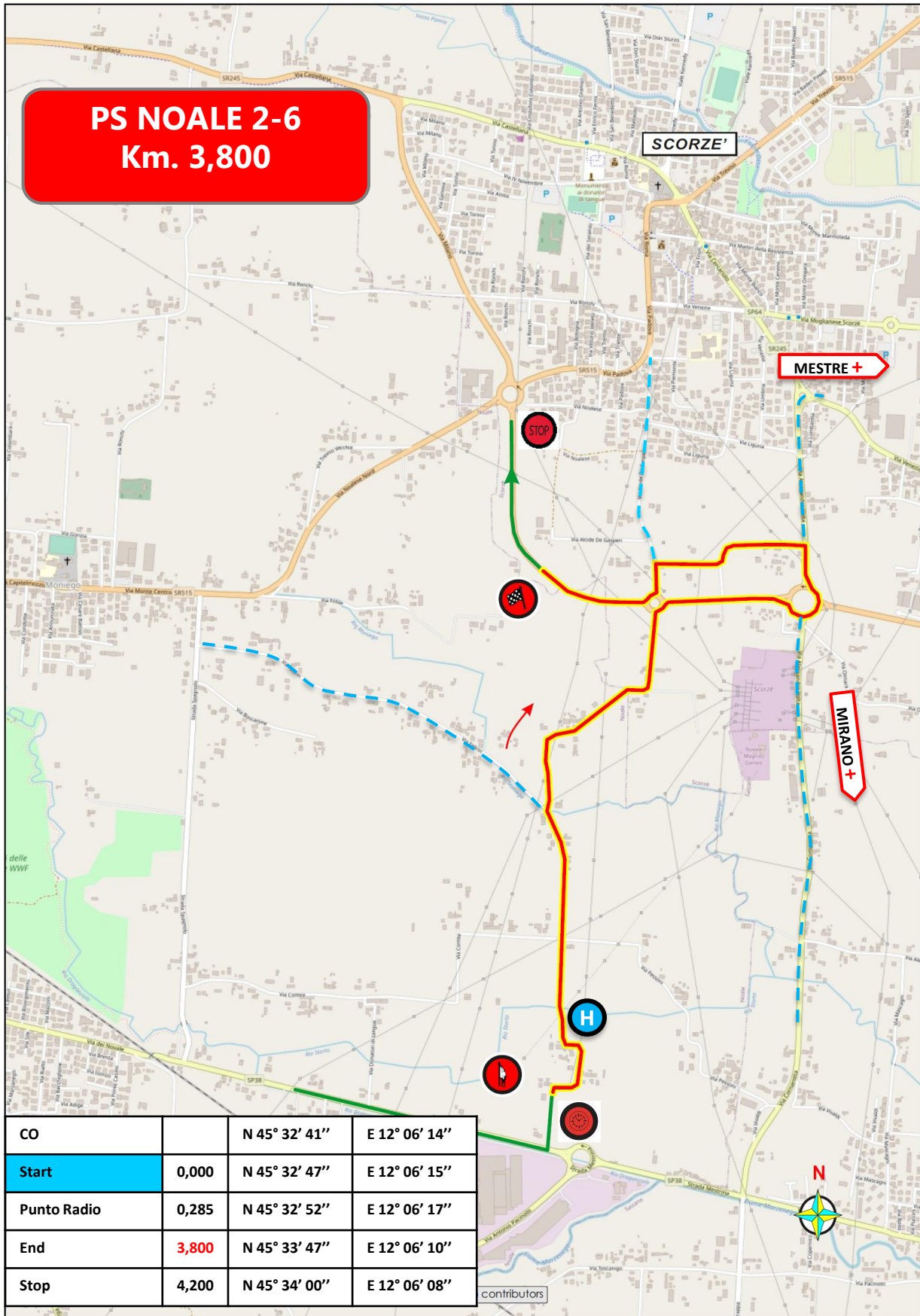


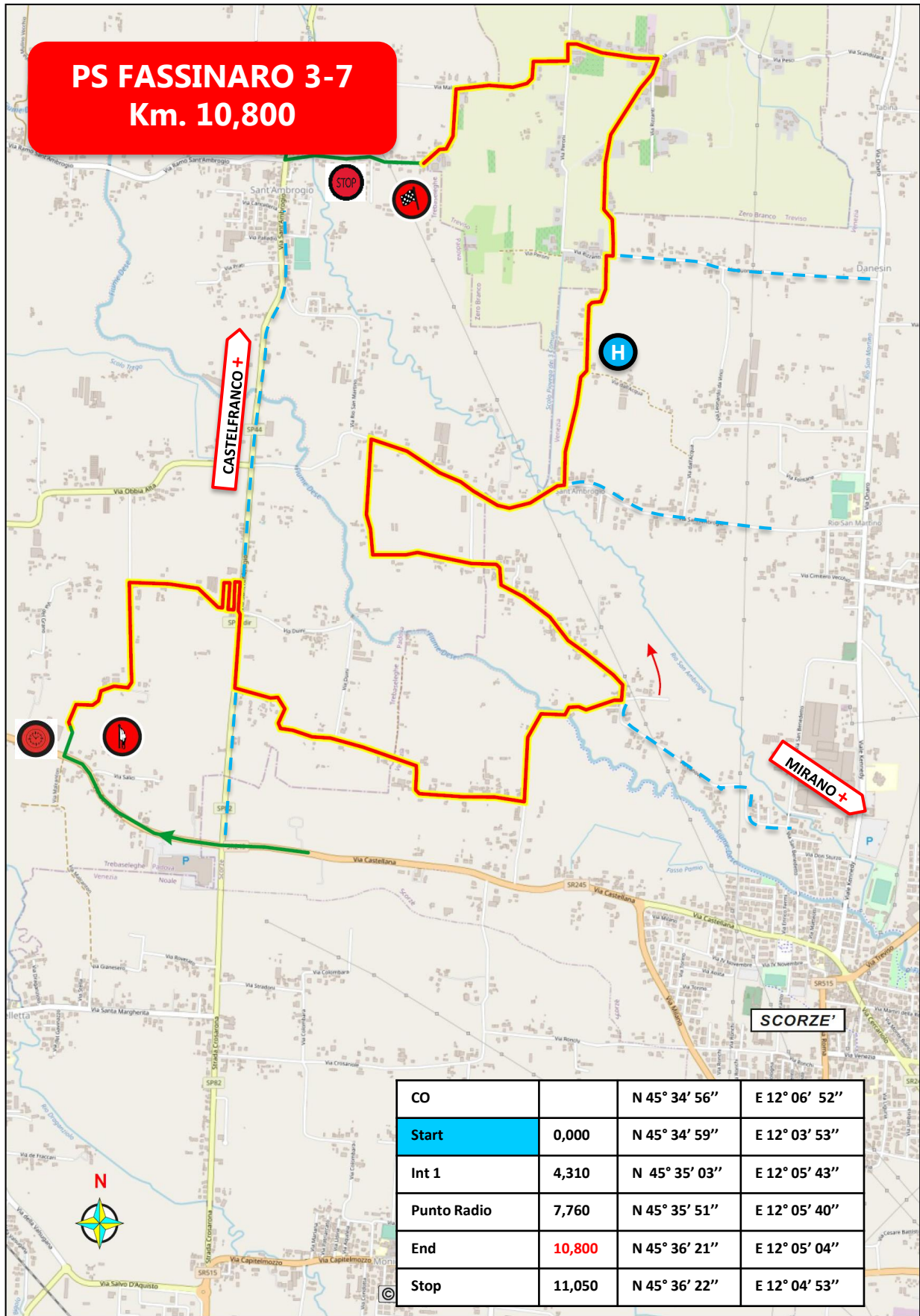
**PS 1 BASE  
PESEGGIA  
Km. 2,550**

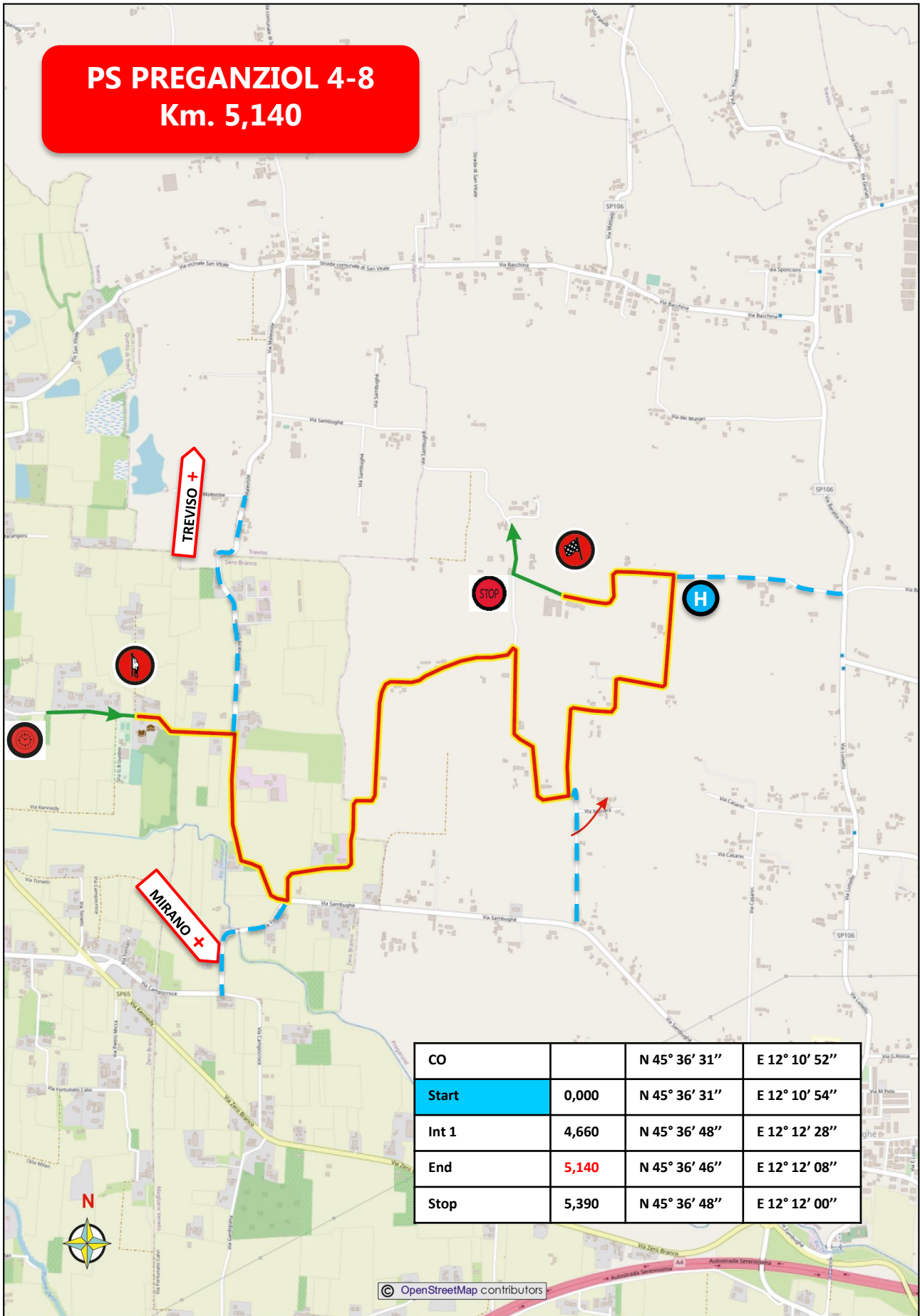


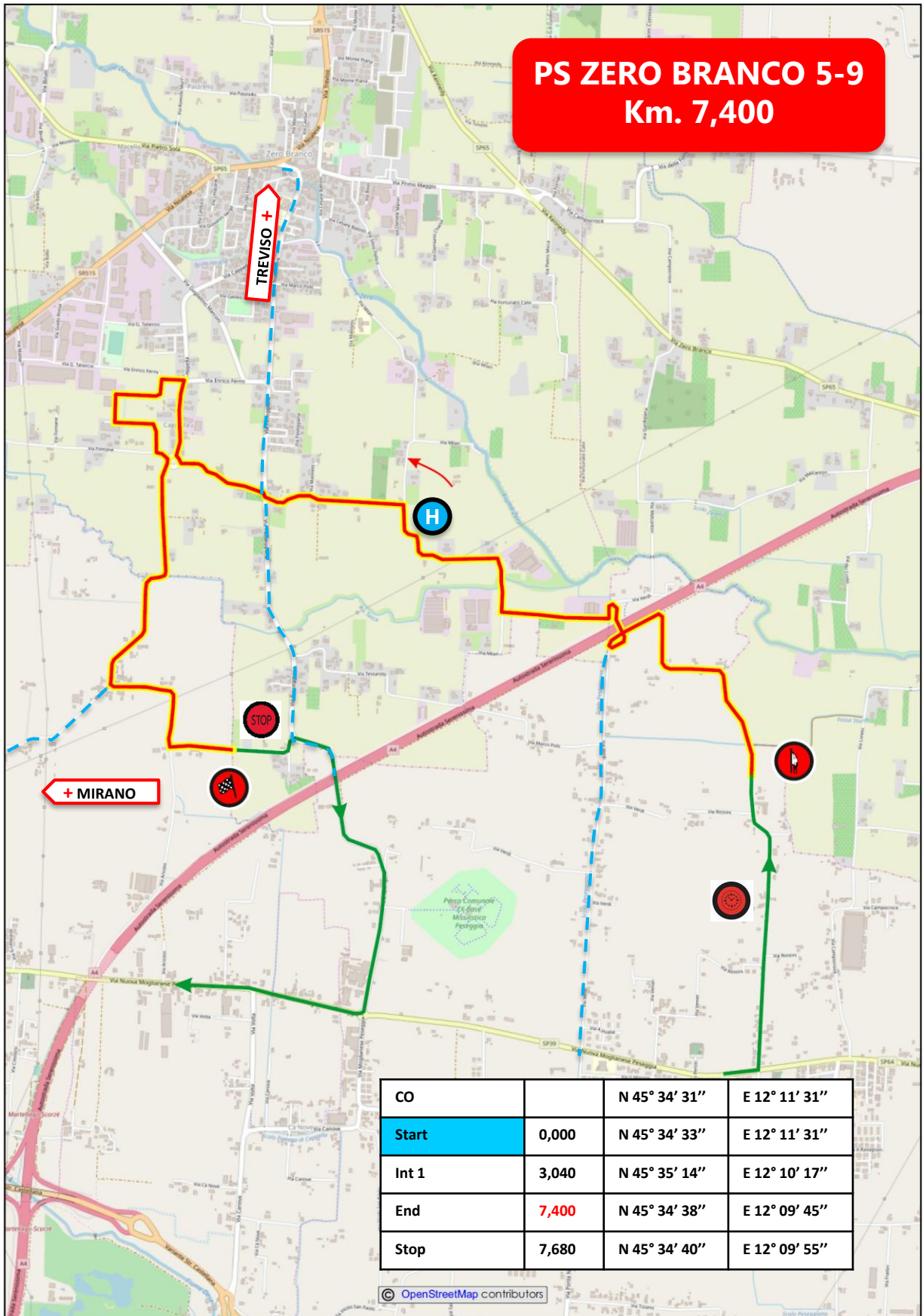
|             |       |               |               |
|-------------|-------|---------------|---------------|
| CO          |       | N 45° 34' 14" | E 12° 10' 23" |
| Start       | 0,000 | N 45° 34' 15" | E 12° 06' 15" |
| Punto Radio | 0,290 | N 45° 34' 16" | E 12° 10' 36" |
| End         | 2,550 | N 45° 34' 16" | E 12° 10' 28" |
| Stop        | 2,680 | N 45° 34' 15" | E 12° 10' 24" |













**PS FASSINARO MINI 10**  
**Km. 5,900**

